



**Field Bill of Material (FBM)**

**INSTALLATION of MICROCODE EC E46522"C"**

**On 3746-900 or 3746-950**

**With**

**Multiaccess Enclosure (FC 3000).**

Written by: J. Michaut  
Illustration by: S. Vaccaro  
Checked by: C. Franoux  
Approved by: A.Badino  
Reviewed by: A. Bowen

3746	PN 02L2978	EC E46522C				
FBM	1 of 12	05SEP97				



## Before Installation (Steps 1-8)

### 1.0 Machines Affected

3746 Models 9X0 with Multiaccess Enclosure Feature (FC 3000), and without Multiaccess Enclosure code level E46522C.

### 2.0 Related BMs and ECs

#### 2.1 Prerequisites

(Must be installed prior to this installation)

Microcode Level D46130D or higher.

**Checkpoint:** Check that the CSS 1 EC level is D46133.011.

**Note:** Refer to **Chapter 3, Displaying the EC Level of Code** in:

- *Service Processor Installation and Maintenance Based on PS/2 9577, SY33-2095, or*
- *Service Processor Installation and Maintenance Based on PS/2 9585, SY33-2109, or*
- *Service Processor Installation and Maintenance Based on 3172, SY33-2111, or*
- *Service Processor Installation and Maintenance (Based on 7585, 3172, 9585, and 9577), SY33-2115.*

If level is not present you must upgrade the Service Processor and the 3746-9x0.

### 3.0 BMs to be Installed

**FBM PN    FBM Title**

**02L2978**    Installation of Microcode EC E46522C on the Multiaccess Enclosure.

### 4.0 Preparation

- Familiarize yourself with the purpose and details of the installation instruction before negotiating machine time with the customer.
- Check all items listed on the BM(s) to determine that all parts have been received.
- Keyboard key combinations are indicated in the text in the following way: **Ctrl-L**.
- Before starting the installation, ask the customer:

3746 FBM	PN 02L2978 3 of 12	EC E46522C 05SEP97				
-------------	-----------------------	-----------------------	--	--	--	--



- To provide the maintenance password (Default: IBM3745).
- To logoff the Service Processor (SP), if not already done.

## 5.0 Programming

None.

## 6.0 Purpose and Description

Install the new microcode in the Multiaccess Enclosure

## 7.0 Installation Time

FFB/M Installed	Machine Hrs	System Hrs	Nbr of CE
02L2978	0.0	0.0	1

## 8.0 Tools/Materials Required

None.

# Installation (Steps 9-12)

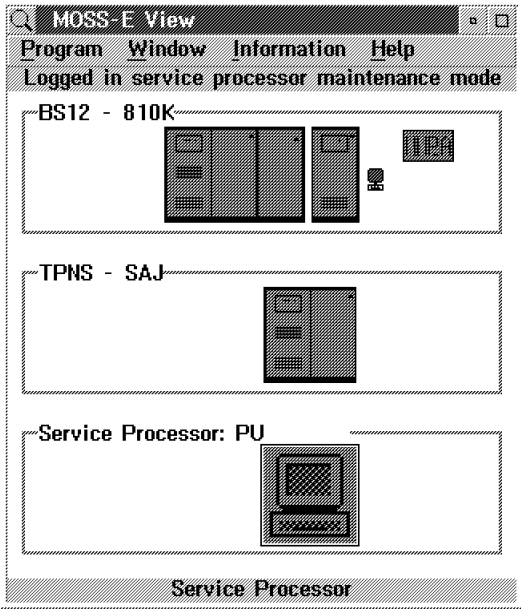
## 9.0 Safety

Not applicable.

## 10.0 Details of Installation

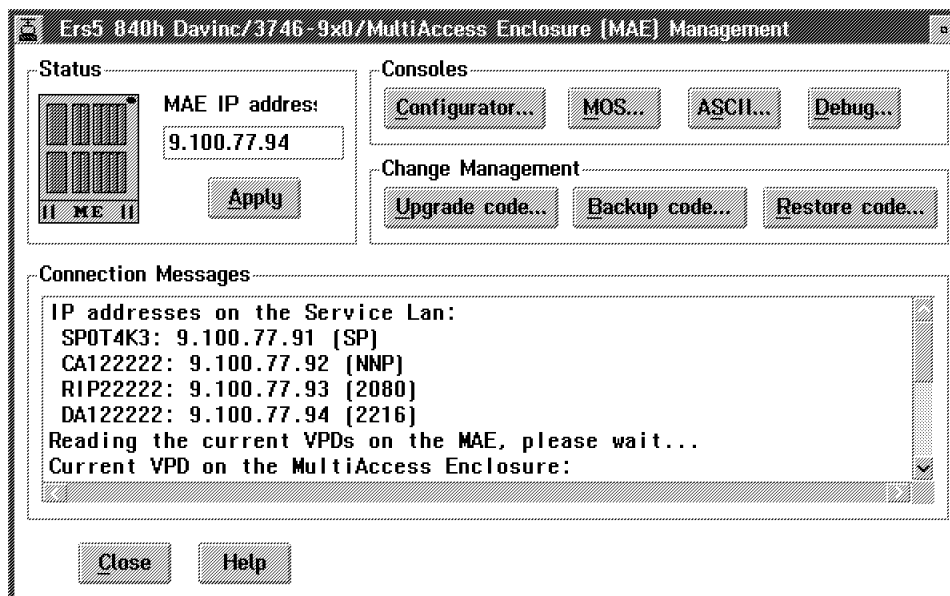
### 10.1 Copying the MAE Active Configuration on the Inactive Bank

1. Logon the Service Processor, if not already done.
2. On the **MOSS-E View** window, double click on the "3746-9x0 object icon"





- \_\_\_ 3. Click on "**Multiaccess Enclosure Management**". Then, double click on "**Manage Multiaccess Enclosure**".
- \_\_\_ 4. On **Multiaccess Enclosure (MAE) Management** window, click on **ASCII** button.

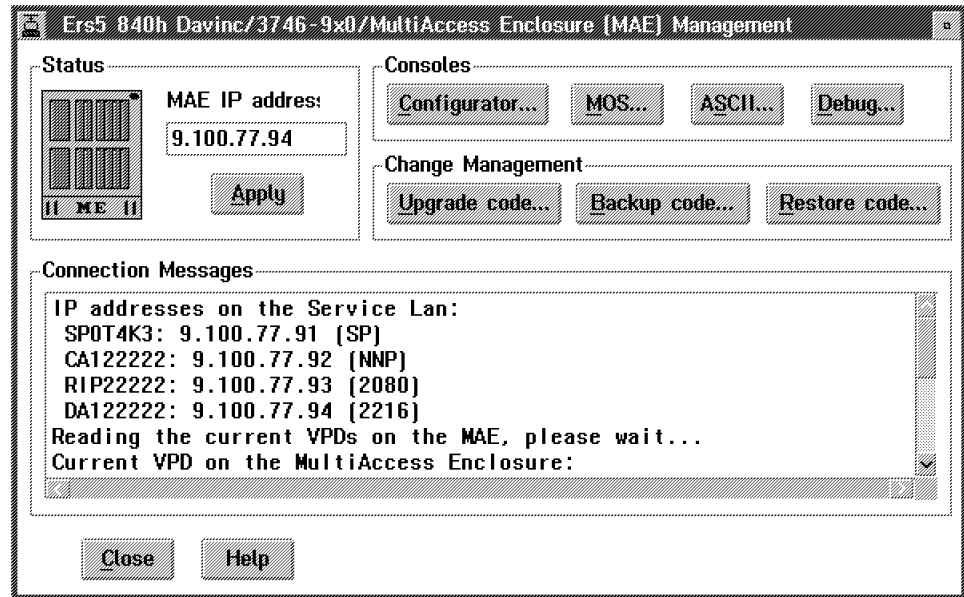


- \_\_\_ 5. On **QVT - MAE** pop-up, click on **OK**.
- \_\_\_ 6. On **QVT - MAE** window, press the **Space** bar. Then, press **Enter**.
- \_\_\_ 7. At the \* prompt, type: **talk 6 (or t 6)**
- \_\_\_ 8. At the Config> prompt, type: **boot** and press **Enter**
- \_\_\_ 9. At the Boot Config> prompt, type: **copy config**
- \_\_\_ 10. Wait for a while, record the **Active** bank (A or B) and configuration (1 to 4).
- \_\_\_ 11. At the **Select the Source Bank (A),(B): [A]** prompt, type **A** or **B** and press **Enter**
- \_\_\_ 12. At the **Select the Source Configuration (1),(2),(3),(4): [1]** prompt, type **1**, **2**, **3** or **4** and press **Enter**
- \_\_\_ 13. At the **Select the Target Bank (A),(B): [B]** prompt, type **A** or **B** and press **Enter**
- \_\_\_ 14. At the **Select the Target Configuration (1),(2),(3),(4): [1]** prompt, type **1**, **2**, **3** or **4** and press **Enter**
- \_\_\_ 15. At the Boot Config> prompt, type: **list**
- \_\_\_ 16. Wait for a while, check the copy results.
- \_\_\_ 17. Press **Ctrl-P**
- \_\_\_ 18. Click on **File**. Then, click on **Exit**

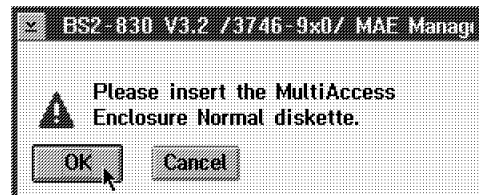


## 10.2 Upgrading the MAE code in the Inactive Bank

1. On **Multiaccess Enclosure (MAE) Management** window, click on **Upgrade code...** button.



2. When requested **"Insert"** the new MAE optical disk (PN 08J5473). Then, click on **OK**.





- \_\_\_ 3. Click on **Upgrade Bank A** or **Upgrade Bank B** (Inactive bank number)

Ers5 840h Davinc/3746-9x0/MultiAccess Enclosure (MAE) Up

MAE operational code level stored on removable media is:

Product ID -	5765-B87
Version 1 Release	1
Maint. 0 PTF	0
Feat. 2802 RPQ	0
Date	21 Mar 1997

Current MAE VPD are:

BANK A				BANK B			
Product ID -	5765-B87	Product ID -	5765-B87				
Version 1 Release	1	Version 1 Release	1				
Maint. 0 PTF	0	Maint. 0 PTF	0				
Feat. 2802 RPQ	0	Feat. 2802 RPQ	0				
Date	21 Mar 1997	Date	2 Mar 1997				

Select which Bank you want to upgrade on ME or click on Cancel.

Upgrade Bank A Upgrade Bank B Cancel Help

## 10.3 Activating the new code.

- \_\_\_ 1. On **Multiaccess Enclosure (MAE) Management** window, click on **ASCII** button.

Ers5 840h Davinc/3746-9x0/MultiAccess Enclosure (MAE) Management

Status

MAE IP address: 9.100.77.94

Apply

Consoles

Configurator... MOS... ASCII... Debug...

Change Management

Upgrade code... Backup code... Restore code...

Connection Messages

IP addresses on the Service Lan:  
SP0T4K3: 9.100.77.91 [SP]  
CA122222: 9.100.77.92 [NNP]  
RIP22222: 9.100.77.93 [2080]  
DA122222: 9.100.77.94 [2216]  
Reading the current VPDs on the MAE, please wait...  
Current VPD on the MultiAccess Enclosure:

Close Help

- \_\_\_ 2. On **ASCII Emulator** window, type: **talk 6** (or **t 6**)

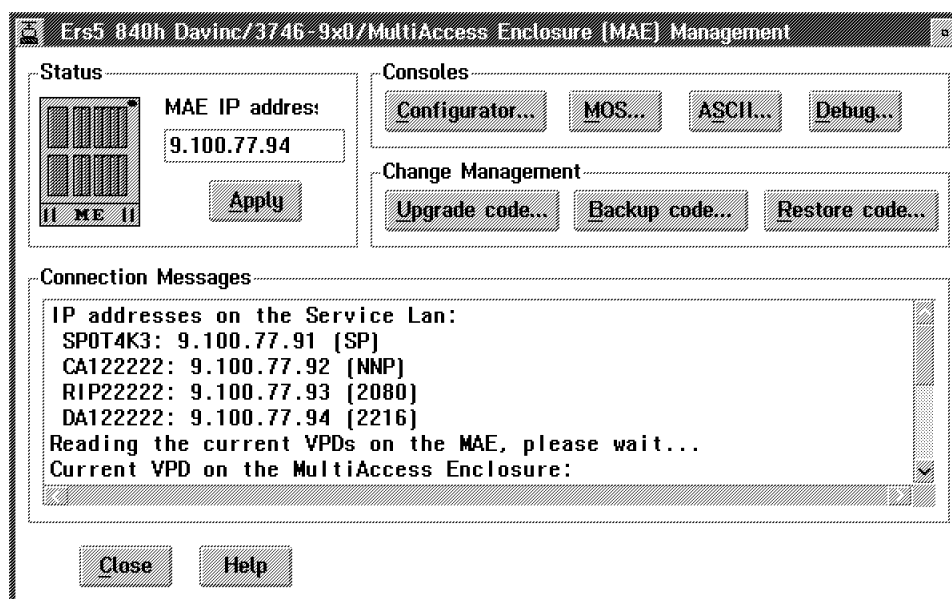




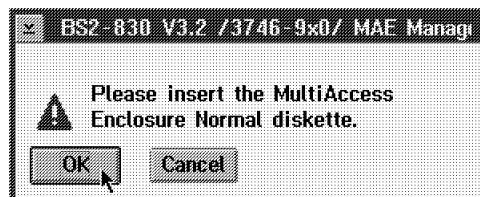
- \_\_\_ 3. Press **Ctrl-P**
- \_\_\_ 4. On \* type: **reload** and press **Enter**
- \_\_\_ 5. Select the **Inactive bank**
- \_\_\_ 6. Select the **Configuration**
- \_\_\_ 7. Press **Ctrl-P**
- \_\_\_ 8. Close the **ASCII Emulator** window.

## 10.4 Upgrading the MAE code in the other Bank

- \_\_\_ 1. Click on "**Upgrade code...**",



- \_\_\_ 2. When requested "**Insert**" the new MAE optical disk (PN 08J5473). Then, click on **OK**.





- \_\_\_ 3. Click on **Upgrade Bank A** or **Upgrade Bank B** (Inactive bank number)

Ers5 840h Davinc/3746-9x0/MultiAccess Enclosure (MAE) Up

MAE operational code level stored on removable media is:

Product ID -	5765-B87
Version 1 Release	1
Maint. 0 PTF	0
Feat. 2802 RPQ	0
Date	21 Mar 1997

Current MAE VPD are:

BANK A				BANK B			
Product ID -	5765-B87	Product ID -	5765-B87	Product ID -	5765-B87	Product ID -	5765-B87
Version 1 Release	1	Version 1 Release	1	Version 1 Release	1	Version 1 Release	1
Maint. 0 PTF	0	Maint. 0 PTF	0	Maint. 0 PTF	0	Maint. 0 PTF	0
Feat. 2802 RPQ	0	Feat. 2802 RPQ	0	Feat. 2802 RPQ	0	Feat. 2802 RPQ	0
Date	21 Mar 1997	Date	21 Mar 1997	Date	2 Mar 1997	Date	2 Mar 1997

Select which Bank you want to upgrade on ME or click on Cancel.

Upgrade Bank A Upgrade Bank B Cancel Help

## 11.0 Test Procedures

Not applicable.

## 12.0 Field Updating

None.

---

## After Installation (13-15)

### 13.0 Publications Update

None.

### 14.0 Parts Disposition

#### 14.1 Purchased Machines

The LIC (Optical Disk) is declared as Sensitive parts. Keeping the Master and Back-up Disks, RETURN all extra Optical disk to your local Branch office, to be returned to plant of Manufacturing HAVANT.

### 15.0 Machine Records

- Install the new **MACHINE HISTORY** supplied.
- Report the installation and quality according to the existing procedure.

**End of instructions.**

